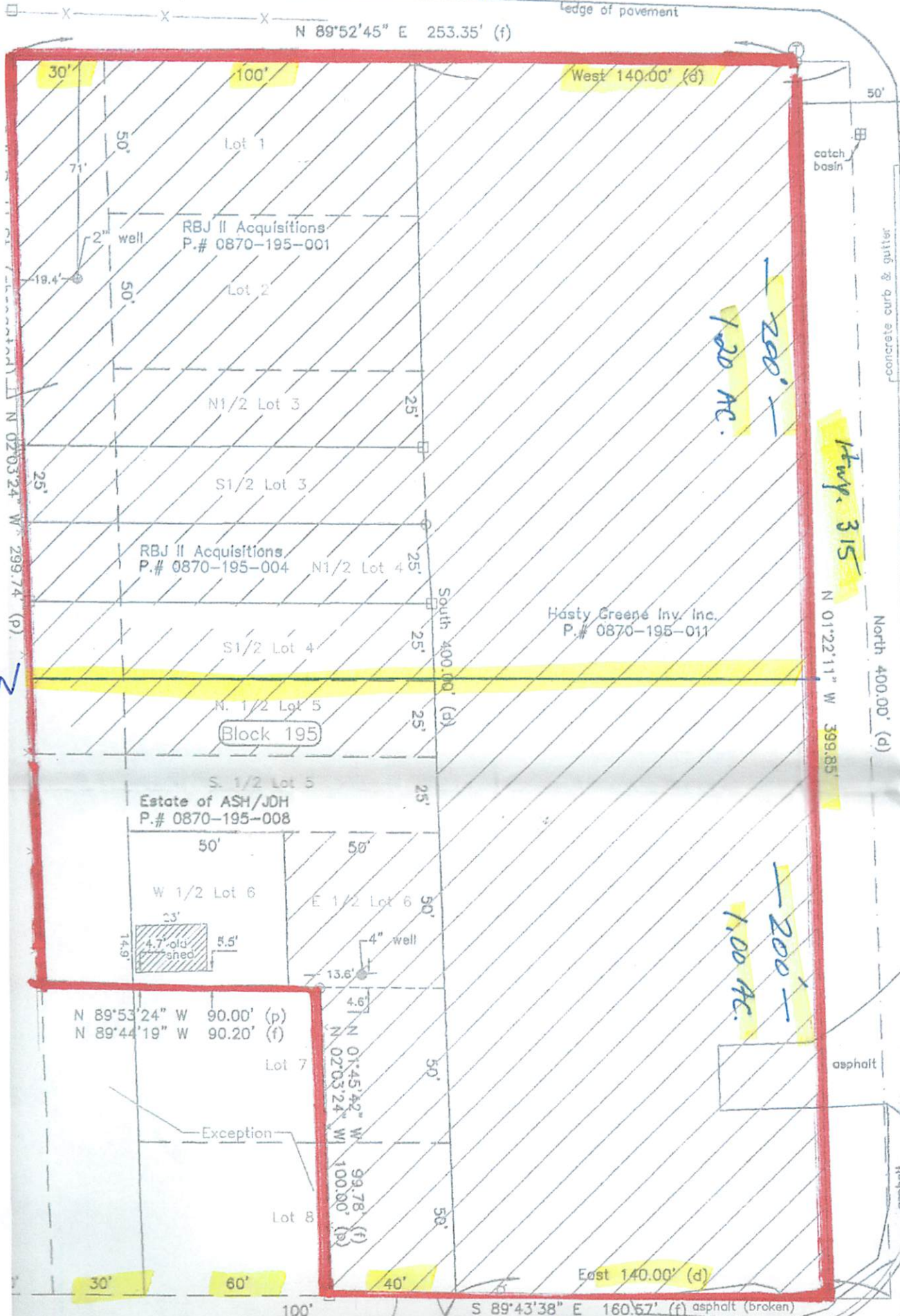


C/L Larue Ave. (50' R/W)

N

ledge of pavement

N 89°52'45" E 253.35' (f)



200' -
1.00 AC.

Hwy. 315

200' -
1.00 AC.

Hwy. 316

L

S

W

N 02°03'24" W 299.74' (p)

N 01°22'11" W 399.85' (d)

North 400.00' (d)

South 400.00' (d)

Hasty Greene Inv. Inc.
P.# 0870-195-011

RBJ II Acquisitions
P.# 0870-195-001

RBJ II Acquisitions
P.# 0870-195-004

Estate of ASH/JDH
P.# 0870-195-008

4.7' old shed

Block 195

RBJ II Acquisitions
P.# 0870-195-001

N. 1/2 Lot 5

S. 1/2 Lot 5

W 1/2 Lot 6

4.7' old shed

N 89°44'19" W 90.20' (f)

Exception

Lot 8

60'

100'

40'

100'

30'

100'

West 140.00' (d)

East 140.00' (d)

S 89°43'38" E 160.67' (f) asphalt (broken)

50'

catch basin

concrete curb & gutter

N 01°22'11" W 399.85' (d)

asphalt

asphalt